

Offers Over £675,000

Jayman  
www.jayman.co.uk

Estate Agents



Richmond Drive

Lichfield, WS14 9SZ

# Richmond Drive, Lichfield, WS14 9SZ

Jayman offer for sale this incredibly well presented and tastefully extended four bedroom detached home on Richmond Drive, Boley Park. Immaculate throughout - this property needs to be seen to be fully appreciated.

## Reception hallway

With stairs to first floor, useful pull out understair storage units, and doors leading to

## Lounge 12'0" x 17'5" (3.67 x 5.31)

Great sized lounge with bay window to the front, feature fireplace, with door to hall and pocket door to Kitchen / Living Room to rear.

## Kitchen / Living Room 21'11" x 256'2" max (6.7 x 78.1 max)

Luxurious fitted kitchen with a range of storage cupboards and integral appliances including double oven, hob, quooker tap, sink and drainer. Space for american style fridge/freezer, and being open plan in design to the living area with both sofa and dining area. Bifold doors open from the lounge area onto the terrace in the rear garden.

## Guest WC

With wash hand basin and wc.

## Utility

Door from kitchen leads to functional utility room with door to rear garden and has a range of fitted storage cupboards.

## Garage 12'5" x 14'1" (3.8 x 4.3)

With door for vehicle access from the front drive but also with heating and flooring making it useful gym / storage room. With electric up and over door and electric point for car charger.

## First floor

Landing with doors leading to;

## Storage Cupboard

Useful store cupboard on the landing.

## Master Bedroom 11'7" x 13'3" (3.55 x 4.05)

Master bedroom being a double bedroom with a range of fitted wardrobes, two window to fore and door to ensuite shower room.

## Ensuite

With suite comprising of wash hand basin, wc and walk in double shower.

## Bedroom 2 9'4" x 12'5" (2.85 x 3.8)

Double bedroom with window to rear.

## Bedroom 3 8'8" x 8'5" (2.66 x 2.58)

Double bedroom with window to rear.

## Bedroom 4 8'4" x 8'5" (2.56 x 2.57)

Double bedroom with window to rear.

## Family Bathroom

With new recently fitted suite comprising of bath with shower above, wash hand basin and wc.

## Rear Garden

Bi-fold doors from the living room at the rear lead to a superb patio for entertaining. Separate lawn area to the side and side access to the front.

## Disclaimer and AML checks

### MONEY LAUNDERING REGULATIONS

Should a purchaser(s) have an offer accepted on a property marketed by Jayman, they will need to undertake an identification check and asked to provide information on the source and proof of funds. This is done to meet our obligation under Anti Money Laundering Regulations (AML) and is a legal requirement. We use a specialist third party service together with an in-house compliance team to verify your information. The intending purchaser(s) will be asked to pay a non-refundable compliance fee of £30.00 inc. VAT per buyer for these checks and will be required to be paid in advance when an offer is agreed and prior to a sales memorandum being issued.

- 1: These particulars do not constitute part or all of an offer or contract.
- 2: The measurements indicated are supplied for guidance only and as such must be considered incorrect.
- 3: Potential buyers are advised to recheck the measurements before committing to any expense.
- 4: Jayman has not tested any apparatus, equipment, fixtures, fittings or services and it is the buyers interests to check the working condition of any appliances.
- 5: Jayman has not sought to verify the legal title of the property, and the buyers must obtain verification from their solicitor.

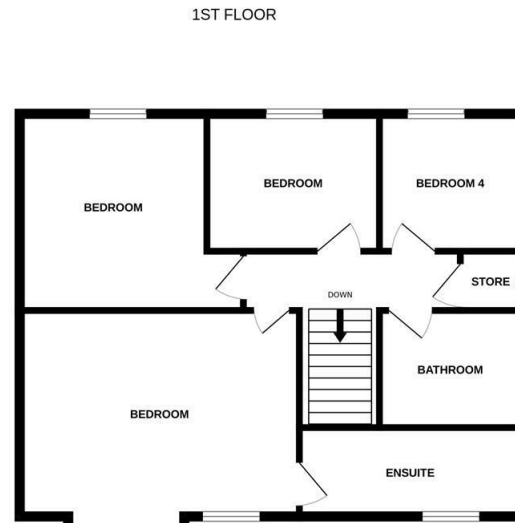
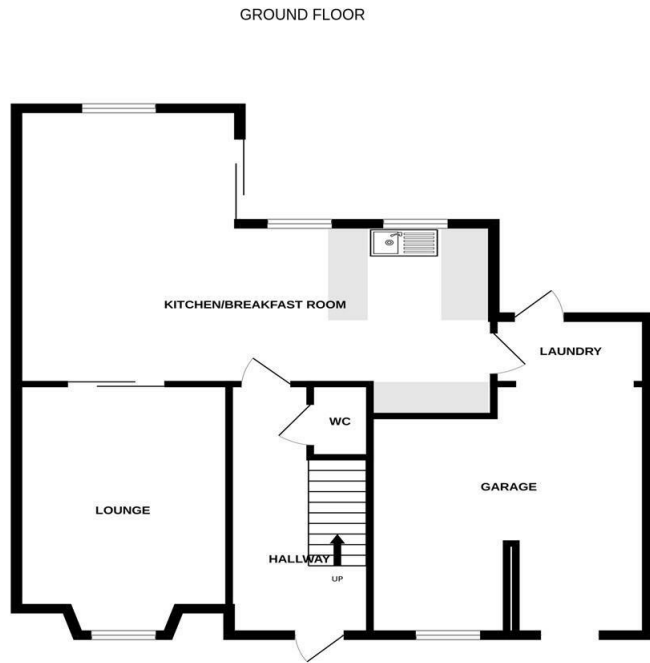
## Looking to sell your home?

Our dedicated team is here to make the process smooth, stress-free, and successful. We pride ourselves on exceptional customer service, guiding you every step of the way with clear communication, expert advice, and a personalized approach tailored to your needs.

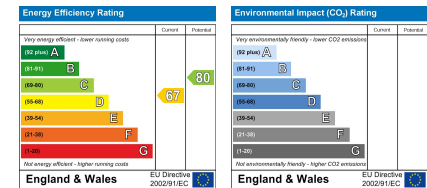
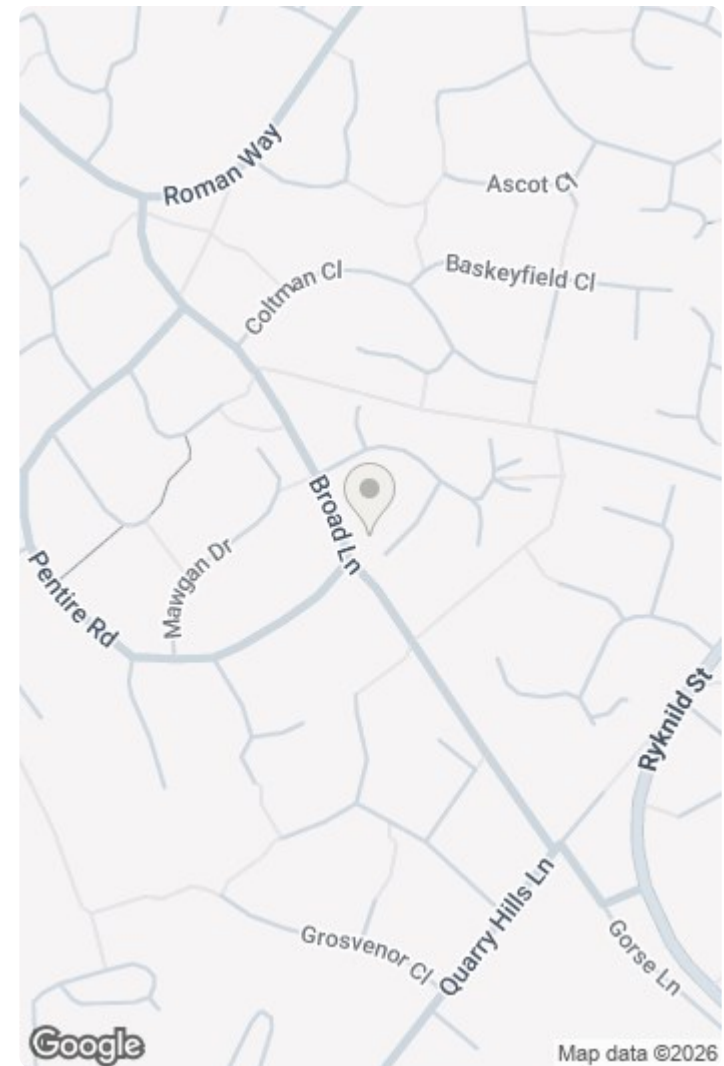
Our top priority is to help you achieve the highest possible price for your property, using strategic marketing, local market expertise, and skilled negotiation. Trust us to deliver results with care, professionalism, and your best interests at heart. For a free valuation please contact us.

**REQUIRE A MORTGAGE?** Our independent advisor can compare "whole of market" to help find the best mortgage to suit your circumstances. Please call 01543 416 567 for a free mortgage quote including some deals only available through our network. **LEGAL CONVEYANCING** Jayman Conveyancing provides fast efficient low cost legal work with a no sale-no fee guarantee. Call 01543 416 567. **AGENTS DESCRIPTIONS** These details imply the opinion of the agent at the time these details were prepared and are subjective. It may be that the purchaser's opinion differs. **VIEWING ARRANGEMENTS** By appointment only with Jayman on 01543 416 567 **COUNCIL TAX** Please refer to www.voa.gov.uk for this information. **DESCRIPTIONS AND MEASUREMENTS** All measurements are approximate and some may be maximum on irregular walls. The plan shows the approximate layout of the rooms to show the inter relationship of relationship of one room to another but is not necessarily to scale. **CONSENTS** We have not had sight of any relevant building regulations, guarantees or planning consents and all relevant documentation pertaining to this property should be checked by your legal advisor before exchanging contracts.





Whilst every attempt has been made to ensure the accuracy of the floorplan contained here, measurements of doors, windows, rooms and any other items are approximate and no responsibility is taken for any error, omission or mis-statement. This plan is for illustrative purposes only and should be used as such by any prospective purchaser. The services, systems and appliances shown have not been tested and no guarantee as to their operability or efficiency can be given.  
Made with Metropix ©2026



We endeavour to make our sales details accurate and reliable but they should not be relied on as statements or representations of fact and they do not constitute any part of an offer or contract. The seller does not make any representation or give any warranty in relation to the property and we have no authority to do so on behalf of the seller. Services, fittings and equipment referred to in the sales details have not been tested (unless otherwise stated) and no warranty can be given as to their condition. We would strongly recommend that all information, which we provide, about the property is verified by yourself or your advisers.

